

# INSWING CASEMENT & TILT & TURN

SERIES 500  
500-C & 500-DA



# INSWING CASEMENT & TILT & TURN

SERIES 500  
500-C & 500-DA

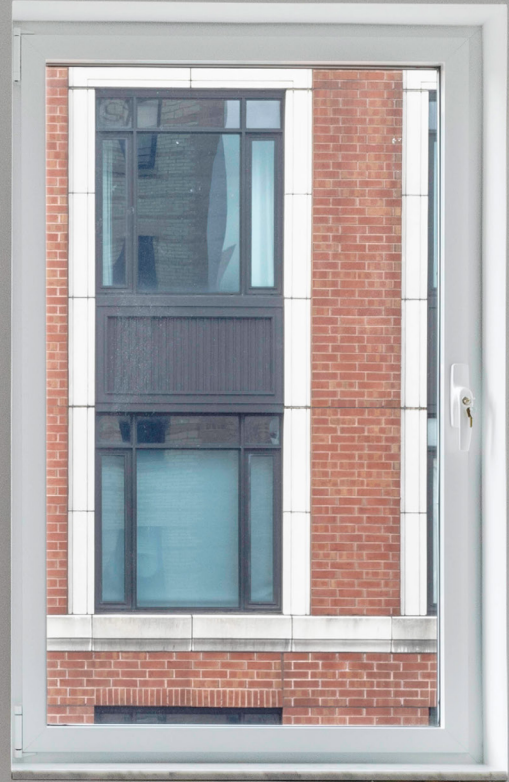


The Skyline Series 500 windows are some of our most versatile products. As the window marketplace has modernized, it has become more demanding. Designers want large windows to enhance views, sound-deadening glass to keep interiors peaceful, and effortless operation. The Skyline Series 500 has it all. Our 500-DA (Dual Action) is a unique Tilt & Turn window that achieves maximal performance with very large sizes. It tilts in at the top for ventilation and opens in for easy-cleaning. The 500-C is an inswing casement that has many of the same high performing qualities as the DA, such as narrow sightlines, safe and efficient cleaning from the interior, child falls hardware options, and hardware that allows for high resistance to air and water penetration.



See our website for more details:  
[www.skylinewindows.com](http://www.skylinewindows.com)






SKYLINE  WINDOWS

220 EAST 138TH STREET  
BRONX, NY 10451  
T (212) 491-3000  
F (212) 491-5630

[skylinewindows.com](http://skylinewindows.com)

## FEATURES + OPTIONS

<b>SKYLINE SERIES</b>	500-DA (Dual Action)
<b>CLASS</b>	Architectural / Heavy Commercial
	
<b>MAXIMUM SIZE</b>	60" x 96" Maximum sash weight 330 lbs
<b>GLASS</b>	1" - 1 1/4" Insulated Glass
<b>MULLING</b>	Self Stacking; Continuous heads & sills 1 pc or 3 pc structural
<b>STANDARD STOCK FINISHES</b>	White Interior / White Exterior White Interior / Bronze Exterior White Interior / Black Exterior Bronze Interior / Bronze Exterior
<i>Custom Colors &amp; Finishes Available Upon Request</i>	AAMA 2603 AAMA 2604 AAMA 2605
<b>MUNTINS</b>	Internal; I.G.U Muntin; Exterior Replica Muntin
<b>SCREENS</b>	Full Screens Available
<b>NOTES</b>	High Efficiency Thermal & Acoustic Designs

## PERFORMANCE AS SPECIFIED

(Based on Independent Laboratory Testing)

<b>AAMA</b>	DA-AW-60
<b>STRUCTURAL LOAD</b>	90 PSF
<b>AIR @ 6.27 PSF</b>	0.01
<b>WATER</b>	12 PSF

## STANDARD HANDLES



## STANDARD STOCK FINISHES



## FEATURES + OPTIONS

<b>SKYLINE SERIES</b>	500-C (Casement)
<b>CLASS</b>	Architectural / Heavy Commercial 
<b>MAXIMUM SIZE</b>	60" x 96" Maximum sash weight 286lbs
<b>GLASS</b>	1" - 1 1/4" Insulated Glass
<b>MULLING</b>	Self Stacking; Continuous heads & sills 1 pc or 3 pc structural
<b>STANDARD STOCK FINISHES</b>	White Interior / White Exterior White Interior / Bronze Exterior White Interior / Black Exterior Bronze Interior / Bronze Exterior
<i>Custom Colors &amp; Finishes Available Upon Request</i>	AAMA 2603 AAMA 2604 AAMA 2605
<b>MUNTINS</b>	Internal; I.G.U Muntin; Exterior Replica Muntin
<b>SCREENS</b>	Full Screens Available
<b>NOTES</b>	High Efficiency Thermal & Acoustic Designs

## PERFORMANCE AS SPECIFIED

(Based on Independent Laboratory Testing)

<b>AAMA</b>	C-AW-100
<b>STRUCTURAL LOAD</b>	150 PSF
<b>AIR @ 6.27 PSF</b>	0.01
<b>WATER</b>	15 PSF



For additional information: [skylinewindows.com/casement-inswing](http://skylinewindows.com/casement-inswing)

## STANDARD HANDLES



## STANDARD STOCK FINISHES

